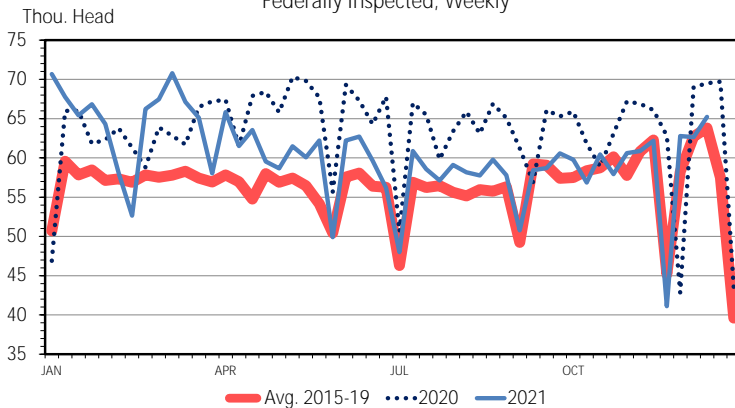


Prices and Production: Estimated slaughter reports that were released Monday saw the year change mid-week, resulting in year-to-date numbers for those reports now showing 2022 versus 2021. Lagged production and slaughter reports will still show year-to-date figures of 2021 vs 2020. Slaughter days may also differ from a year ago during different weeks of the year.

The December 1 Hogs and Pigs report was covered in recent DLR's and indicated that the breeding herd is about the same level as a year ago. A flattening of the breeding herd is supported by the continued pace of sow slaughter. Year-to-date weekly sow slaughter through the week ending

SOW SLAUGHTER
Federally Inspected, Weekly



Data Source: USDA-AMS & USDA-NASS
Livestock Marketing Information Center

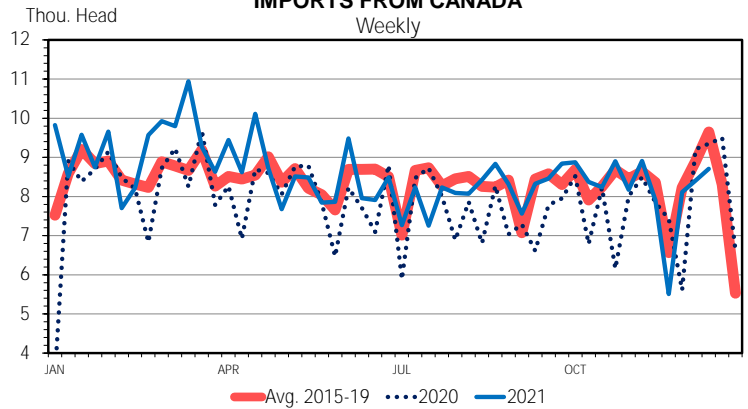
H-S-15
01/03/22

December 18, 2021, is totaling nearly 3.1 million head, down 5.8% from the same period in 2020, but up 3.7% from 2019. In 2020, sow slaughter totaled 3.3 million head, the highest level since 2008 (3.5 million head). Although sow slaughter in 2021 was down from 2020 the pace was still among the highest in the last decade.

Prior DLRs have discussed that adjusting sow slaughter for imports of slaughter sows, mainly coming from Canada, gives a better reflection on U.S. sow slaughter and potential impacts to breeding inventories. Canadian livestock import data is available through USDA AMS reports [WA LS635](#) (By State of Entry) and [WA LS637](#) (By Destination). Through mid-December, weekly slaughter sow imports from Canada have totaled more than 433,000 head, about 31,000 head (7.6%) above 2020 and the highest since 2018. The USDA Foreign Agricultural Service (FAS) Production, Supply and Distribution (PSD) data is forecasting Canada's sow stocks to increase marginally for 2022 suggesting slaughter sow imports will likely moderate lower in 2022.

Adjusting weekly sow slaughter for Canadian slaughter sow imports shows that through mid-December just over 2.6 million head were slaughtered, down 7.7% from 2020 but 3.8% higher than 2019. Accounting for sow imports still

SLAUGHTER SOWS & BOARS IMPORTS FROM CANADA
Weekly



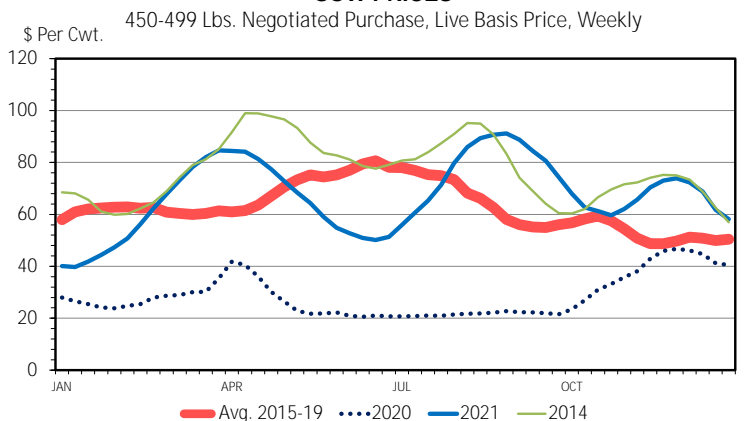
Data Source: USDA-AMS & USDA-APHIS
Livestock Marketing Information Center

01/03/22

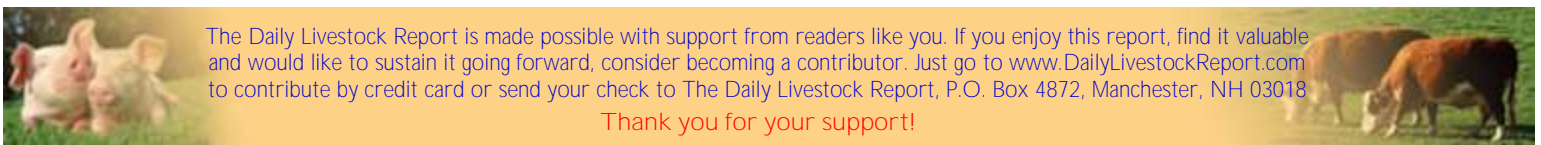
points toward a strong pace of sow slaughter supporting the level breeding herd inventories report by the December 1 Hogs and Pigs report.

Part of the equation into sow slaughter are sow prices. The annual average sow price (450-499 Lbs. negotiated purchase, live basis) averaged just over \$67 per cwt, more than double (136%) the price in 2020 and the highest price since 2014 (\$76.76). In 2021, sow prices peaked three separate times which provided an economic opportunity for producers who may have been looking to retain gilts and refresh their herd. The sow prices chart also includes 2014 prices which saw that 2021 followed a similar pattern with peaks in April, August, and November.

SOW PRICES



Data Source: USDA-AMS, Compiled by LMIC
Livestock Marketing Information Center



The Daily Livestock Report is made possible with support from readers like you. If you enjoy this report, find it valuable and would like to sustain it going forward, consider becoming a contributor. Just go to www.DailyLivestockReport.com to contribute by credit card or send your check to The Daily Livestock Report, P.O. Box 4872, Manchester, NH 03018

Thank you for your support!

The **Daily Livestock Report** is published by Steiner Consulting Group, DLR Division, Inc.. To subscribe, support or unsubscribe please visit www.dailylivestockreport.com.

The Daily Livestock Report is not owned, controlled, endorsed or sold by CME Group Inc. or its affiliates and CME Group Inc. and its affiliates disclaim any and all responsibility for the information contained herein. CME Group, CME and the Globe logo are trademarks of Chicago Mercantile Exchange, Inc.

Disclaimer: The *Daily Livestock Report* is intended solely for information purposes and is not to be construed, under any circumstances, by implication or otherwise, as an offer to sell or a solicitation to buy or trade any commodities or securities whatsoever. Information is obtained from sources believed to be reliable, but is in no way guaranteed. No guarantee of any kind is implied or possible where projections of future conditions are attempted. Futures trading is not suitable for all investors, and involves the risk of loss. Past results are no indication of future performance. Futures are a leveraged investment, and because only a percentage of a contract's value is required to trade, it is possible to lose more than the amount of money initially deposited for a futures position. Therefore, traders should only use funds that they can afford to lose without affecting their lifestyle. And only a portion of those funds should be devoted to any one trade because a trader cannot expect to profit on every trade.

PRODUCTION & PRICE SUMMARY

Week Ending 1/1/2022

Source: Various USDA Agricultural Marketing Service (Market News) reports. DATA ARE PRELIMINARY.

Item	Units	Current Week	Last Week	Pct. Change	Last Year	Pct. Change	YTD	Y/Y % Change
		1-Jan-22	25-Dec-21		2-Jan-21			
Beef, Pork, Chicken, & Turkey	Mil Lbs., cwe	1,618	1,723	-6.1%	1,547	4.6%	45,696	-1.2%
C FI Slaughter	Thou. Head	537	488	10.0%	515	4.3%	1	-98.5%
A FI Cow Slaughter **	Thou. Head	141	142	-0.4%	130	8.5%	12,832	2.0%
T Avg. Dressed Weight	Lbs.	840	841	-0.1%	842	-0.2%	800	-5.5%
T Beef Production	Million Lbs.	450.1	409.7	9.9%	432.9	4.0%	1	-98.6%
L Live Fed Steer Price, 5-Mkt	\$ per cwt	135.64	135.64	0.0%	111.51	21.6%		
E Dressed Steer Price, 5-Mkt	\$ per cwt	217.30	218.42	-0.5%	175.67	23.7%		
Oklahoma Steer (600-700 lbs)	\$ per cwt	NQ	NQ	N/A	NQ	N/A		
& Choice Beef Cutout	\$ per cwt	265.03	262.14	1.1%	209.65	26.4%		
Hide/Offal	\$ per cwt, live wt	13.60	13.77	-1.2%	9.09	49.6%		
B Rib, Primal, Choice	\$ per cwt	403.28	417.08	-3.3%	361.18	11.7%		
E Round, Primal, Choice	\$ per cwt	221.36	217.49	1.8%	185.11	19.6%		
E Chuck, Primal, Choice	\$ per cwt	224.36	216.16	3.8%	178.50	25.7%		
F Trimmings, 50%, Fresh	\$ per cwt	95.37	92.21	3.4%	34.68	175.0%		
Trimmings, 90%, Fresh	\$ per cwt	274.07	275.16	-0.4%	209.46	30.8%		
H FI Slaughter	Thou. Head	2,181	1,918	13.7%	2,149	1.5%	1	-99.7%
H FI Sow Slaughter **	Thou. Head	65.2	62.7	4.1%	69.7	-6.4%	6,361	1.8%
O Avg. Dressed Weight	Lbs.	218.0	218.0	0.0%	220.0	-0.9%	200	-9.3%
G Pork Production	Million Lbs.	474.7	417.3	13.8%	473.2	0.3%	0	-99.7%
S Natl. Negotiated Purchase	Wtd. Avg.	61.39	60.15	2.1%	49.93	23.0%		
Natl. Base Carcass Price	Wtd. Avg.	73.18	73.99	-1.1%	61.85	18.3%		
& Natl. Net Carcass Price	Wtd. Avg.	74.70	75.62	-1.2%	63.22	18.2%		
Natl. Early Wean Feeder	10-12 Lbs.	58.50	56.33	3.9%	49.06	19.2%		
P Pork Cutout	\$ per cwt	87.22	86.89	0.4%	73.86	18.1%		
O By-product Value	\$ per cwt, live wt	5.08	5.06	0.4%	4.34	17.1%		
R Ham, Primal	\$ per cwt	64.14	67.78	-5.4%	61.22	4.8%		
K Loin, Primal	\$ per cwt	80.45	81.85	-1.7%	72.32	11.2%		
Belly, Primal	\$ per cwt	130.46	123.70	5.5%	102.63	27.1%		
Trimmings, 72%, Fresh	\$ per cwt	67.66	67.66	0.0%	68.61	-1.4%		
C Young Chicken Slaughter *	Million Head	132.7	163.1	-18.7%	122.99	7.9%	8,401	-1.2%
H Avg. Weight (RTC)	Lbs.	4.73	4.86	-2.7%	4.70	0.5%	4.84	0.9%
I Young Chicken Production (RTC)	Million Lbs.	627.1	792.2	-20.8%	578.6	8.4%	40,651	-0.4%
C Eggs Set (US)	Million	238.8	237.5	0.5%	236.7	0.9%	24,372	1.3%
K Chicks Placed (US)	Million Head	186.4	187.3	-0.5%	183.1	1.8%	19,247	-0.1%
E National Composite Whole Bird	Composite	132.95	128.34	3.6%	80.48	65.2%		
N Northeast Breast, B/S	\$ per cwt	207.88	206.46	0.7%	95.02	118.8%		
Northeast Leg Quarters	\$ per cwt	38.25	36.46	4.9%	28.31	35.1%		
T Total Turkey Slaughter *	Million Head	2.63	3.94	-33.1%	2.19	20.4%	197.0	-5.0%
U Avg. Weight (RTC)	Lbs.	25.17	26.39	-4.6%	28.47	-11.6%	25.60	-0.2%
R Turkey Production (RTC)	Million Lbs.	66.3	103.9	-36.2%	62.3	6.4%	5,044	-5.2%
K National Hen (8-12 Lbs)	\$ per cwt	124.00	131.25	-5.5%	105.00	18.1%		
G Corn, Omaha	\$ per Bushel	5.97	12.94	-53.9%	4.80	24.4%		
R Distillers Grain, IA	\$ per Ton	NQ		N/A	210.00	N/A		
A Soybean, Cntrl IL	\$ per Bushel	13.38	13.44	-0.4%	13.25	1.0%		
I Soybn Meal 48%, Cntrl IL	\$ per Ton	431.40	409.50	5.3%	431.90	-0.1%		
N								

* Chicken & turkey slaughter & production are 1 week earlier than the date at the top of this sheet.

** Cow and sow slaughter reflect levels from two weeks ago (part of "actual" rather than "preliminary" weekly slaughter report).

The Daily Livestock Report is made possible with support from readers like you. If you enjoy reading this report and would like to sustain it going forward, [consider becoming a contributor](http://www.DailyLivestockReport.com) by going to our website: www.DailyLivestockReport.com

Thank you for your support!

