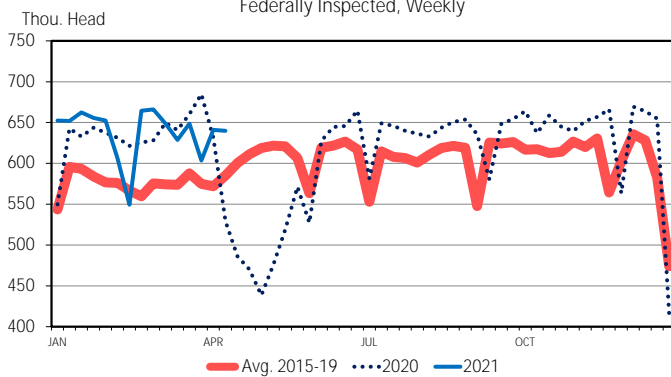


Cattle slaughter was estimated this week at 640,000. Estimated steer and heifer slaughter was down compared to previous weeks. Cow slaughter was down 12% from the prior week. Saturday slaughter levels jumped up to 70,000 head to help round out the week. The result is beef production is estimated to be down 0.1% from last week. Compared to a year ago, slaughter is up 31.7%. As you can see on the chart, comparisons against the large drop in 2020 are just starting this week, making percent changes versus a year ago look very large.

**CATTLE SLAUGHTER**  
Federally Inspected, Weekly



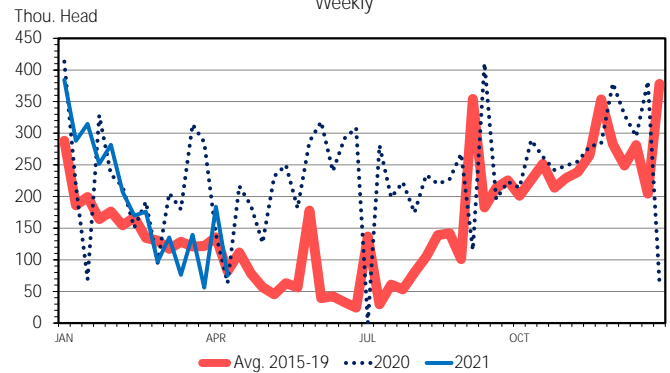
Data Source: USDA-AMS & USDA-NASS  
Livestock Marketing Information Center

C-S-08  
04/16/21

Hog slaughter was up about 1% from last week totaling 2,469,000 head. Weights were estimated at the same level which pushed pork production up 0.9% over last week. Compared to a year ago, the numbers show an 10.3% jump from the pandemic stricken slaughter levels and production is 11% ahead of the same week in 2020. Saturday slaughter on the hog side look to post a light week, estimated at only 75,000 head. This would be the smallest Saturday harvest level of 2021 and is only 17,000 head above last year's.

Sheep slaughter is even with last week and 2.8% below last year. Slaughter levels are still reflecting the plant closure in Greeley which was still operating last year. Lamb/Mutton production is down 4.2% compared to last week. Dressed weights are 7 pounds heavier than last year at this time, elevating year-over-year comparisons to nearly 10% higher than

**SATURDAY HOG SLAUGHTER**  
Weekly



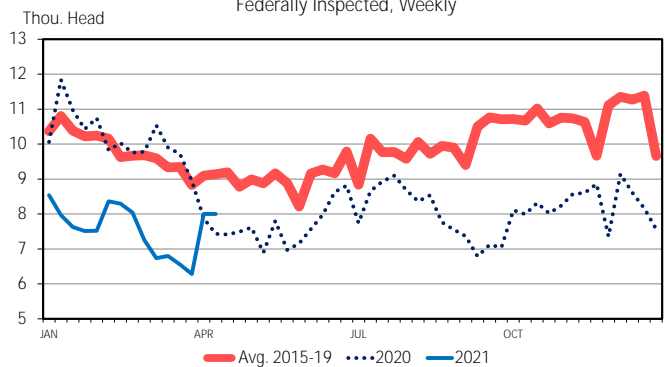
Data Source: USDA-AMS & USDA-NASS  
Livestock Marketing Information Center

H-S-11  
04/16/21

2020.

Calf slaughter continues to be estimated at 8,000 head per week, however many weeks have been revised lower when actual slaughter data is tallied. Calf slaughter has only a few weeks above 8,000 head in 2021. Veal production is estimated to be even with last week and is 20% above a year ago. Higher dressed weights are a contributing factor, which are 12 pounds heavier. It is expected production will be revised lower as well, when slaughter is revised.

**CALF SLAUGHTER**  
Federally Inspected, Weekly



Data Source: USDA-AMS & USDA-NASS  
Livestock Marketing Information Center

C-S-32  
04/16/21

The Daily Livestock Report is made possible with support from readers like you. If you enjoy this report, find it valuable and would like to sustain it going forward, consider becoming a contributor. Just go to [www.DailyLivestockReport.com](http://www.DailyLivestockReport.com) to contribute by credit card or send your check to The Daily Livestock Report, P.O. Box 4872, Manchester, NH 03018

Thank you for your support!

The **Daily Livestock Report** is published by Steiner Consulting Group, DLR Division, Inc.. To subscribe, support or unsubscribe please visit [www.dailylivestockreport.com](http://www.dailylivestockreport.com).

The Daily Livestock Report is not owned, controlled, endorsed or sold by CME Group Inc. or its affiliates and CME Group Inc. and its affiliates disclaim any and all responsibility for the information contained herein. CME Group®, CME® and the Globe logo are trademarks of Chicago Mercantile Exchange, Inc.

Disclaimer: The *Daily Livestock Report* is intended solely for information purposes and is not to be construed, under any circumstances, by implication or otherwise, as an offer to sell or a solicitation to buy or trade any commodities or securities whatsoever. Information is obtained from sources believed to be reliable, but is in no way guaranteed. No guarantee of any kind is implied or possible where projections of future conditions are attempted. Futures trading is not suitable for all investors, and involves the risk of loss. Past results are no indication of future performance. Futures are a leveraged investment, and because only a percentage of a contract's value is required to trade, it is possible to lose more than the amount of money initially deposited for a futures position. Therefore, traders should only use funds that they can afford to lose without affecting their lifestyle. And only a portion of those funds should be devoted to any one trade because a trader cannot expect to profit on every trade.

## PRODUCTION & PRICE SUMMARY

Week Ending 4/17/2021

Source: Various USDA Agricultural Marketing Service (Market News) reports. DATA ARE PRELIMINARY.

Item	Units	Current Week	Last Week	Pct. Change	Last Year	Pct. Change	YTD	Y/Y % Change
		17-Apr-21	10-Apr-21		18-Apr-20			
Beef, Pork, Chicken, & Turkey	Mil Lbs., cwe	1,931	1,913	1.0%	1,698	13.7%	29,694	-1.8%
C FI Slaughter	Thou. Head	640	641	-0.2%	486	31.7%	9,639	-0.4%
A FI Cow Slaughter **	Thou. Head	116	132	-12.0%	120	-3.7%	8,083	-1.1%
T Avg. Dressed Weight	Lbs.	830	830	0.0%	816	1.7%	836	1.3%
T Beef Production	Million Lbs.	530.2	530.9	-0.1%	395.6	34.0%	8,063	0.9%
L Live Fed Steer Price, 5-Mkt	\$ per cwt	121.93	122.01	-0.1%	102.28	19.2%		
E Dressed Steer Price, 5-Mkt	\$ per cwt	195.63	195.30	0.2%	157.18	24.5%		
Oklahoma Steer (600-700 lbs)	\$ per cwt	NQ	158.19	N/A	136.63	N/A		
& Choice Beef Cutout	\$ per cwt	273.42	266.08	2.8%	231.58	18.1%		
Hide/Offal	\$ per cwt, live wt	10.92	10.70	2.1%	6.99	56.2%		
B Rib, Primal, Choice	\$ per cwt	468.43	452.66	3.5%	282.10	66.1%		
E Round, Primal, Choice	\$ per cwt	197.06	196.52	0.3%	259.59	-24.1%		
E Chuck, Primal, Choice	\$ per cwt	204.64	202.44	1.1%	232.51	-12.0%		
F Trimmings, 50%, Fresh	\$ per cwt	96.77	83.25	16.2%	70.75	36.8%		
Trimmings, 90%, Fresh	\$ per cwt	235.65	233.86	0.8%	240.64	-2.1%		
H FI Slaughter	Thou. Head	2,469	2,487	-0.7%	2,239	10.3%	39,141	-3.4%
O FI Sow Slaughter **	Thou. Head	58.0	65.1	-10.9%	67.4	-13.9%	4,181	8.0%
O Avg. Dressed Weight	Lbs.	217.0	217.0	0.0%	216.0	0.5%	218	1.4%
G Pork Production	Million Lbs.	536	540.5	-0.8%	482.9	11.0%	8,552	-2.1%
S Natl. Negotiated Purchase	Wtd. Avg.	101.59	99.08	2.5%	34.54	194.1%		
& Natl. Base Carcass Price	Wtd. Avg.	98.76	96.37	2.5%	48.73	102.7%		
Natl. Net Carcass Price	Wtd. Avg.	100.72	98.42	2.3%	50.74	98.5%		
P Natl. Early Wean Feeder	10-12 Lbs.	50.04	49.18	1.7%	13.45	272.0%		
O Pork Cutout	\$ per cwt	111.63	110.71	0.8%	54.81	103.7%		
R By-product Value	\$ per cwt, live wt	4.82	4.84	-0.4%	3.69	30.6%		
K Ham, Primal	\$ per cwt	92.04	86.80	6.0%	34.95	163.3%		
Loin, Primal	\$ per cwt	96.34	93.27	3.3%	86.63	11.2%		
Belly, Primal	\$ per cwt	189.74	200.71	-5.5%	49.14	286.1%		
Trimmings, 72%, Fresh	\$ per cwt	127.84	133.93	-4.5%	34.47	270.9%		
C Young Chicken Slaughter *	Million Head	161.4	161.9	-0.4%	155.11	4.0%	2,410	-4.2%
H Avg. Weight (RTC)	Lbs.	4.78	4.73	1.0%	4.73	1.0%	4.82	1.6%
I Young Chicken Production (RTC)	Million Lbs.	771.4	766.7	0.6%	734.4	5.0%	11,608	-2.7%
C Eggs Set (US)	Million	237.3	240.1	-1.2%	218.0	8.9%	15,587	0.1%
K Chicks Placed (US)	Million Head	187.5	187.3	0.1%	178.6	5.0%	12,403	-0.8%
E National Composite Whole Bird	Composite	99.95	98.84	1.1%	50.00	99.9%		
N Northeast Breast, B/S	\$ per cwt	168.54	159.56	5.6%	87.34	93.0%		
Northeast Leg Quarters	\$ per cwt	44.46	42.59	4.4%	35.47	25.3%		
T Total Turkey Slaughter *	Million Head	3.64	2.85	27.7%	3.35	8.6%	55.0	-8.4%
U Avg. Weight (RTC)	Lbs.	25.80	26.36	-2.1%	25.43	1.4%	26.78	0.8%
R Turkey Production (RTC)	Million Lbs.	93.8	75.0	25.0%	85.1	10.2%	1,472	-7.7%
K National Hen (8-12 Lbs)	\$ per cwt	113.00	115.39	-2.1%	104.00	8.7%		
G Corn, Omaha	\$ per Bushel	5.91	5.79	1.9%	3.02	95.5%		
R Distillers Grain, IA	\$ per Ton	197.50	197.50	0.0%	195.00	1.3%		
A Soybean, Cntrl IL	\$ per Bushel	14.57	14.51	0.4%	8.48	71.8%		
I Soybn Meal 48%, Cntrl IL	\$ per Ton	396.00	407.40	-2.8%	295.60	34.0%		
N								

\* Chicken & turkey slaughter & production are 1 week earlier than the date at the top of this sheet.

\*\* Cow and sow slaughter reflect levels from two weeks ago (part of "actual" rather than "preliminary" weekly slaughter report).

The Daily Livestock Report is made possible with support from readers like you. If you enjoy this report, find it valuable and would like to sustain it going forward, consider becoming a contributor. Just go to [www.DailyLivestockReport.com](http://www.DailyLivestockReport.com) to contribute by credit card or send your check to The Daily Livestock Report, P.O. Box 4872, Manchester, NH 03018

Thank you for your support!

