

Copyright ©2021 Steiner Consulting Group, DLR Division, Inc. All rights reserved.

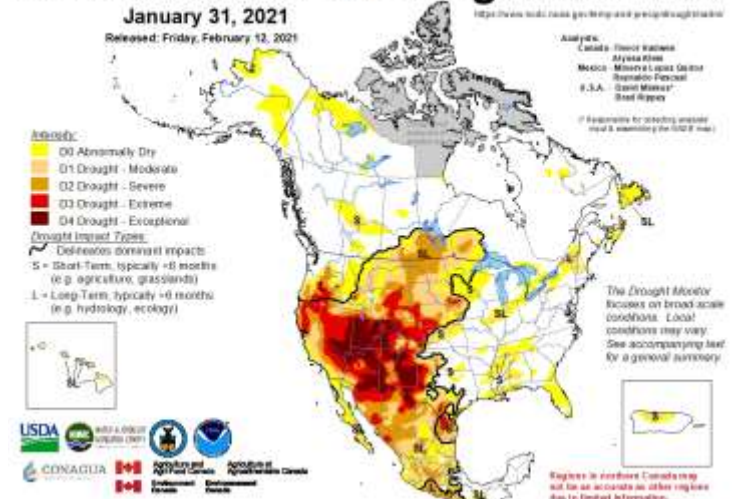
Vol. 19, No. 46 / March 9, 2021

Yesterday's DLR discussed meat trade data that was released by USDA for the month of January. This DLR will discuss trends in U.S. livestock trade and the data that was released for the month of January.

Total cattle imports for January were 133,149 head, down 9.4% (13,771 head) from a year ago and the lowest level since 2018. Shipments from Mexico totaled 87,675 head, a decline of 5.9% (5,490 head) and a nearly two-thirds market share for the month (65.8%). Similar to much of the Western U.S., Northern Mexico is struggling with dryness and drought conditions, according to the Northern American Drought Monitor map released January 31, 2021. The dry conditions were likely a contributing factor to the 15.3% year-over-year increase in cattle shipments during the second half of 2020. Annually, Mexico's cattle exports to the U.S. were up 9.2% to over 1.4 million head in 2020, the highest since 2012 which was also a dry year. If drought persists and limits available pasture and feed in Mexico, more cattle may be shipped to the U.S. for placement in 2021. Currently, USDA FAS has Mexico's 2021 cattle exports forecast at 1.45 million head.

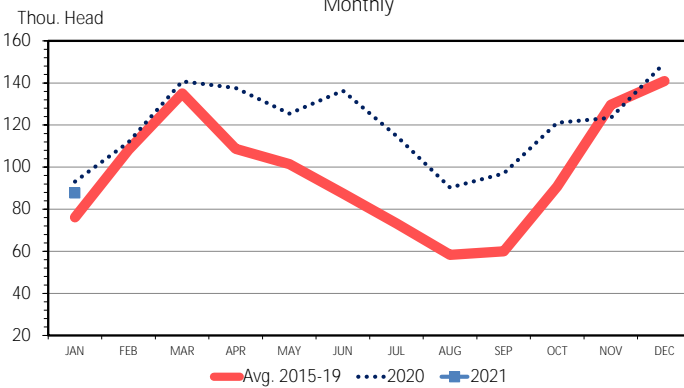
Canada supplied the remaining one-third of cattle shipments for the month of January at 45,474 head, a decrease of 15.4% (8,281 head). Lower shipments from Canada occurred last year which saw a 6.9% (49,739 head) annual decline from 2019. As discussed in the [March 5, 2021 DLR](#), Canada's beef cow herd is at its lowest point in three decades. The lower inventory levels are contributing to fewer slaughter cattle shipments to the U.S. On the flip side, elevated levels of U.S. feeder cattle continue to be shipped to Canada to partially offset fewer available Canadian cattle for placement. In January, the U.S. exported 27,197 head of cattle to Canada which is the highest amount in two decades. USDA FAS is forecasting Canada's cattle imports for 2021 at 275,000 head, similar to levels seen in the last two years.

## North American Drought Monitor



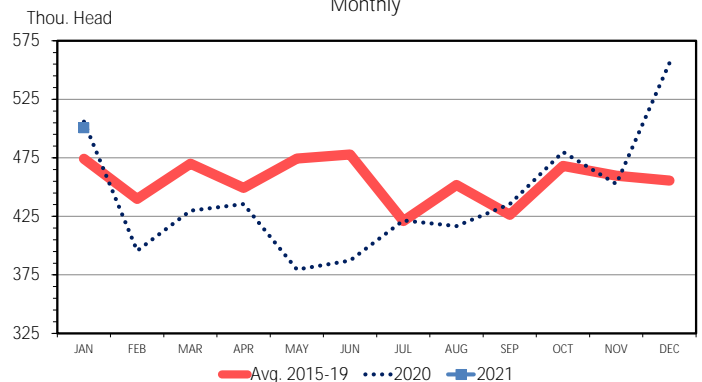
The hogs shipped to the U.S. are primarily supplied by Canada which exported 500,541 head in January, down 1.1% from last year. Over three-quarters (77.2% or 386,512 head) of the hogs sent in January weighed less than 50kg (110 lbs.). The same [March 5, 2021 DLR](#) noted that Canada's hog inventory levels point toward ample supplies of heavy weight hogs for the near term, but supplies may become tighter in the spring which could lead to fewer feeder hog shipments (weighing less than 50kg) to the U.S. during that timeframe. USDA FAS is forecasting Canada's 2021 hog exports at 5.3 million head, about level with shipments in 2020.

**US CATTLE IMPORTS FROM MEXICO**  
Monthly

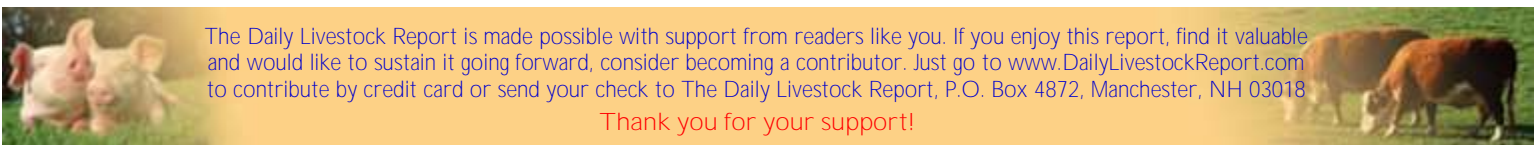


Data Source: USDA-ERS & USDA-FAS  
Livestock Marketing Information Center

**US LIVE HOG IMPORTS FROM CANADA**  
Monthly



Data Source: USDA-ERS & USDA-FAS  
Livestock Marketing Information Center



The Daily Livestock Report is made possible with support from readers like you. If you enjoy this report, find it valuable and would like to sustain it going forward, consider becoming a contributor. Just go to [www.DailyLivestockReport.com](http://www.DailyLivestockReport.com) to contribute by credit card or send your check to The Daily Livestock Report, P.O. Box 4872, Manchester, NH 03018

Thank you for your support!

The **Daily Livestock Report** is published by **Steiner Consulting Group, DLR Division, Inc.** To subscribe, support or unsubscribe please visit [www.dailylivestockreport.com](http://www.dailylivestockreport.com).

The Daily Livestock Report is not owned, controlled, endorsed or sold by CME Group Inc. or its affiliates and CME Group Inc. and its affiliates disclaim any and all responsibility for the information contained herein. CME Group, CME and the Globe logo are trademarks of Chicago Mercantile Exchange, Inc.

Disclaimer: The *Daily Livestock Report* is intended solely for information purposes and is not to be construed, under any circumstances, by implication or otherwise, as an offer to sell or a solicitation to buy or trade any commodities or securities whatsoever. Information is obtained from sources believed to be reliable, but is in no way guaranteed. No guarantee of any kind is implied or possible where projections of future conditions are attempted. Futures trading is not suitable for all investors, and involves the risk of loss. Past results are no indication of future performance. Futures are a leveraged investment, and because only a percentage of a contract's value is required to trade, it is possible to lose more than the amount of money initially deposited for a futures position. Therefore, traders should only use funds that they can afford to lose without affecting their lifestyle. And only a portion of those funds should be devoted to any one trade because a trader cannot expect to profit on every trade.